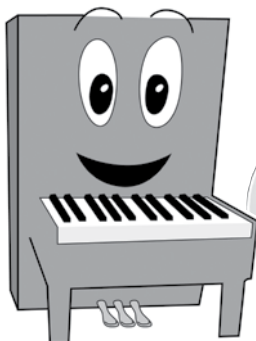


eMedia

MY PIANO KIT

The Fun Way for Kids to Learn!

Instruction Manual



Plug and play!

Congratulations!

You are the new owner of the *eMedia My Piano Kit* – a fun and fantastic way to learn to play piano!



What's included:

- 49-key keyboard with mid-size keys
- *eMedia My Piano* Win/Mac CD-ROM
- USB-MIDI interface cable
- AC Adapter
- Instruction Manual

This manual will help you set up your piano kit and get started with the piano lessons. Later on it will also describe additional features found on the keyboard. Many of the additional features are not needed for the piano lessons but can be fun to experiment with.

Connecting Your Keyboard



Plug the AC Adapter into a wall outlet and plug the AC Adapter's cord into the DC 9V input on the back of the keyboard.



Plug the USB end of the USB-MIDI interface cable into your computer's USB port and connect the red MIDI plug into the "MIDI out" port on the back of the keyboard. (The black MIDI plug on your USB-MIDI interface is not used.)



Turn on your keyboard by switching the power switch found on top of the keyboard to "On".

eMedia My Piano CD-ROM Installation Instructions

Windows® XP, Vista and Windows 7

- 1) Insert the *eMedia My Piano* CD-ROM. If the installer begins automatically, skip steps 2-4.
- 2) Click on the *Start* button and select the *Run...* menu item.
- 3) In the *Open* box, type the letter of your CD drive, a colon, a backslash and the word "Setup" (e.g. - "D:\Setup").
- 4) Click *OK* and follow the instructions that appear on your screen.

Note: It is best to install *My Piano* with the default settings. The easiest way to do this is to refrain from changing anything during the installation. Simply click *Next* when the opportunity is presented.

- 5) To run the software, click on the *Start* button, choose the *Programs* menu item and then select the program.

Macintosh OS X

- 1) Insert the *eMedia My Piano* CD-ROM.
- 2) Double-click the *eMedia My Piano* CD-ROM icon that appears on the desktop.
- 3) Drag the program icon from the CD-ROM to your *Applications* folder.
- 4) Double-click the program icon in the *Applications* folder to run the program.

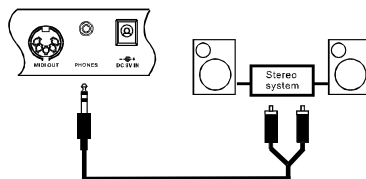
Users of Mac OS X 10.6 (Snow Leopard) or later may need to install Rosetta to use our software. See www.emediamusic.com/snowleopard if you need help with this or have other Mac OS X 10.6 install issues.

For tech support with your eMedia product, please visit www.emediamusic.com/support or contact eMedia technical support at (206) 329-5657 during regular business hours (9am to 5pm PST Mon-Fri).

Piano Sounds from Your Computer

Note that when you play your keyboard you may hear it from both your keyboard's speakers and your computer's speakers. You can change whether or not it plays through your computer's speakers by selecting the *MIDI Settings* menu item from the *Options* menu when running the *eMedia My Piano* software. You can check or uncheck the *Play MIDI keyboard input through computer* box that appears there.

Plug an audio cord into PHONE jack. Then plug the other end of the cord into LINE IN or AUX IN of the amplifier.



Play the Keyboard

1. To turn on the keyboard, set POWER to ON. The display lights.

Note: To remind you to save power during operation, the keyboard automatically sounds a voice about every 5 minutes if you do not press a key.

2. Adjust the volume to desire level. Repeatedly press volume up or volume down to increase or decrease the volume. The keyboard's volume ranges from 0 (no sound) to 10 (maximum), and the current volume level appears on the display.

Playing the Demo Song

You can listen to any of the 50 songs listed at the right of the panel.

1. Press **SONG**. The display appears SONG and the number of the current song.

Note: The keyboard always selects the tune "Canon"(No. 01)each time you turniton.

2. Choose a song from the SONGS list and enter its two-digit number on the keypad.

Or, you can press - or + to move to the Next higher or lower numbered song.

3. Press **START/STOP** to start playing the song.

- a "score" to show you the notes that areplaying (center of the display)
 - a "keyboard" to show you the fingering and which keys are pressed (bottom of the display)
 - The black dots next to the song number show the beat count in the measure.
 - The chord name (top left of the display.
4. To change the tempo, repeatedly press **TEMPO UP** or **TEMPO DOWN**. The current tempo setting appears.
 5. To select a different song, repeat step 2. To stop, press **START/STOP**.

Using DEMO

To play demo song one by one (in order from the selected starting point), press DEMO. To stop the demo, press DEMO again.

Selecting/Playing a Preset Voice

Your keyboard can sound like 50 different musical instruments. The name and two-digit number for each preset voice is listed on voices list on the keyboard's top panel.

Note: The keyboards has 8-note (maximum) polyphonic sound. This means that you can play up to 8 different notes at the same time with most of the keyboard's preset voices.

Selecting/Playing a Preset Voice

1. Press **VOICE**. **VOICE** and the current voice's number appears.

Note: Each time you turn the keyboard on, it automatically selects the voice Grand PIANO (No. 01).

2. To play a different voice, choose a preset voice from the VOICES list and enter its two-digit number on the number button. As you press the buttons, the selected digits appear. For example, to select VIBRAPHONE (No. 06), press "0" and "6", the style "06" appears.

Or, you can use + or - to move to the next higher or lower numbered voice.

3. Play the keyboard to hear the selected voice.
4. To select a different voice, repeat Steps 1 and 2.

Selecting/Playing a Auto-Style.

Your keyboard has 30 preset auto-styles that provide a steady beat for your music. The name and two-digit number of each preset auto-style is listed on the styles list on the keyboard's top panel.

1. Press **STYLE**. **STYLE** and the current style's number appear.

Note: Each time you turn on the keyboard, it automatically selects the style DISCO 1(No. 01).

2. To select a different style, choose an auto-style from the STYLES list and enter its two-digit number on the number button. Or, repeatedly press + or - to move to the next higher or lower numbered style. For example, press 03 to select DANCE (No. 03), press "0" and "3", the style 03 appears.

3. Press **START/STOP** to start the selected Auto-Style.

4. To change the tempo, repeatedly press **TEMPO +** or **TEMPO -**. The current tempo setting appears.

Notes:

5. To select a different style, repeat steps 1 and 2.
6. To stop the auto-style, press **START /STOP** again.

- You can adjust the tempo to play an auto-style from 40 to 240 beats per minute.

- To reset the tempo to its default (original) speed, press **TEMPO +** and **TEMPO -** at the same time.

Using SYNC

This feature lets you synchronize the start of an auto-style with the beginning of your music.

After you select and enter an auto-style, press **SYNC/FILL-IN**. The black dots below the tempo and the metronome flash show the keyboard is in a standby mode.

Begin playing the keyboard. The keyboard automatically begins to play the style when you press any key.

Using FILL-IN

This feature lets insert a short (1- to 2-measure) variation in the beat pattern of a selected auto-style.

Simply press **SYNC/FILL-IN** while the auto-style is playing. The keyboard inserts a variation, then the original style automatically resumes at the end of the current measure. Or to insert a longer variation, hold down **SYNC/FILL-IN**. The keyboard plays the variation until you release **SYNC/FILL-IN**.

Using Sustain

For added flexibility and control as you make music, you can set the keyboard, so it sustain sound.

To sustain notes you play, press **SUSTAIN.SUSTAIN** appears and the keyboard sustains the played note until you release **SUSTAIN**. Press **SUSTAIN** again to turn off sustain.

Percussion Pads

Using a Percussion Pad

Your keyboard's percussion pads put the sound of 5 different percussion instruments (bass drum, snare drum, hi-hat open, high tom-tom, and hi-hat close) at your finger tips.

To play a percussion pad sound, simply press the desired pad at any time. The keyboard plays the selected percussion sound once each time you press the pad.

Assigning a Percussion Pad Sound

You can assign any of the available percussion sounds onto any of the percussion pads. This lets you quickly select and play any percussion sound that the keyboard can make.

Note: The keyboard clears any sound you assign to a percussion pad each time you turn it off.

Using MIDI

MIDI (Musical Instrument Digital Interface) is a world-standard digital communications interface/language that allows multiple electronic instruments, computers, and other related device to communicate with each other within a connected.

The MIDI IN port receives MIDI data from an external MIDI device. The MIDI OUT port transmits MIDI data to an external MIDI device. The instruments communicate with each other by sending

Follow these steps to record and play a percussion pad sound.

1. Press **VOICE** then enter **5 0** on the keyboard.
2. Select the voice you want by pressing any of the 16 white keys in the middle of the keyboard until you hear the sound you want.
3. When you hear the voice you want to record, hold down the percussion pad you want to assign the sound to and press the white key.
4. Play the percussion pad to hear assigned voice.

Transposing

The keyboard automatically selects the key of middle C each time you turn it on. For added flexibility, you can transpose (change) the keyboard's key using as many as 12 steps (+6 -6). You can adjust the transposition freely by pressing the **X'POSER** buttons.

To transpose the keyboard's key, press **X'POSER +** to raise a chromatic scale. Or **X'POSER -** to decrease a chromatic.

To reset the keyboard's key to its default, press **X'POSER +** and **X'POSER -** at the same time.

'messages' or MIDI data. The sending instrument usually assigns the data to one of the sixteen MIDI channels, then transmits it over the MIDI cable. The cable itself, however, is not divided up into sixteen channels, just as with a television set that receives programs on different channels, it is up to the receiving instrument to 'tune into' the proper MIDI channel. If the sending and receiving channels on the respective instruments do not match, the receiving instrument may not understand or respond to the one sending.

Using Auto Accompaniment

The 19 keys on the left side of the keyboard with note labels above them are called accompaniment keys. The accompaniment keys you press determine the type of chord that plays.

You can set the keyboard to play with no accompaniment or two different types of auto accompaniment using the accompaniment keys.

- Normal - normal mode. Chords are turned off in this mode (but you can select voice and style).
- S.Finger - single fingering mode. This mode lets you play chords on the accompaniment keys using standard chord formations (see "Single Fingering").
- Fingered - standard fingering mode. This mode lets you play chords on the accompaniment keys using chord formations of from three or more notes. The chord name appears on the display. The number of keys you press determines the type of chord that plays.

Note: Your keyboard defaults to the normal mode. Follow the steps under "Single Fingering" or "Standard Fingering" to set it to an accompaniment mode.

Single Fingering

1. Repeatedly press **CHORD** until a black dot appears next to **S.FINGER** on the left side of the display.
2. Press **STYLE**.
3. Enter a two-digit auto-style number.
4. To start the auto-style before the auto accompaniment, press **START/STOP**. Or, to synchronize the start of the selected auto-rhythm with your accompaniment, press **SYNC/FILL IN**.

5. Begin the accompaniment at the desired interval by pressing the desired accompaniment key(s).
6. To play a melody along with the accompaniment, press any key(s) to the right.
7. Adjust **TEMPO** and **VOLUME** to the desired level.
8. To change chords without interrupting the style, simply press the auto accompaniment key(s) required to form the new chord. The name of the chord appears. To stop auto accompaniment but not the auto-style, repeatedly press **CHORD** until the black dot appears next to **NORMAL** on the display. Or, to stop auto accompaniment and the auto-style, press **START/STOP**.

Standard Fingering

The standard fingering method uses standard formations of three or more notes, and lets the experienced musician play a wider variety of accompaniment chords.

Follow these steps to start standard fingering auto accompaniment.

1. Repeatedly press **CHORD** until a black dot appears next to **FINGERED** on the left side of the display.
2. Follow the step 2-8 as Single Fingering.

Learning To Play

Your keyboard's learning feature let beginning keyboard players easily learn and play a prerecorded tune. You can select any of the following modes:

- **ONE KEY** - in this mode, press **START/STOP** and any key to play accompaniment and a melody note. The note appears.

- **MELODY GUIDE** - in this mode, the melody does not play until you play a correct note. The next note of the song appears.
- **MELODY OFF** - in this mode, you can play melody with accompaniment.

Follow these steps to set the learning mode.

1. Press **SONG**, then repeatedly press **LEARNING** until black dots appear next to **ONE KEY** on the right side of the display.
2. Select a song from the **SONGS** list and enter its two-digit number.
3. Press **START/STOP**. The keyboard plays the first note of the tune you selected and the note appears. Press the corresponding key on the keyboard to continue learning. The next note you need to press appears. The song will continue to play even if you press the wrong key.
4. To stop learning, press **START/STOP** again or press **LEARNING**. If you

pressed **LEARNING**, a black dot appears next to **MELODY GUIDE** and a note appears. Press the correct key to continue learning. The song doesn't play until you press the correct key.

If you want to play the tune with accompaniment in the learning mode, repeatedly press **LEARNING** until a black dot appears next to **MELODY OFF**. If you want to quit the learning mode. Repeatedly press **LEARNING** until the black dot appears next to **NORMAL**.

Using the Metronome

To turn on the keyboard's metronome, press voice or style, then press **METRO**. The metronome's bar swings along with the tempo you selected, and the corresponding beat appears. Press **METRO** again to turn the metronome off.

Using Beat

When the metronome is on, repeatedly press **BEAT** until you hear the desired beat to adjust it. 9 beats (00.02-09) are available and can be selected cyclically. The beat number you selected appears.

Special Features

Recording

you can record a sequence of notes up to 37 notes in length.

1. Press **RECORD** to start recording. **RECORD** appears.
2. Play the notes you want to record.
3. Press **PLAY** to play the notes you recorded. **PLAY** appears.
4. To turn off recording, press **RECORD** again, **RECORD** disappears.

Note: If the keyboard loses power, recording is turned off and any recording you made is erased.

Using One-Touch Setting

Your keyboard's one-touch setting feature lets you automatically play a preset voice to match a selected auto-style you changed.

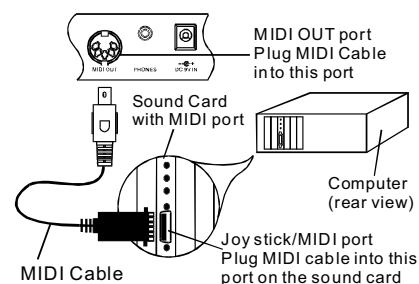
Follow these steps to activate one-touch setting.

1. Press **STYLE**.
2. Enter a two-digit auto-style number.
3. Press **O.T.S.**, O.T.S. appears
4. Press **VOICE**. The preset voice that matches the selected auto-style appears.

To quit one-touch setting, press **O.T.S.**, O.T.S. Disappears.

Connecting with PC (Personal Computer)

1. Switch off both keyboard and PC.
2. Connect the keyboard and PC with a MIDI adaptor (one end with 5-pin plug and the other end with 15-pin plug).
3. Switch on both keyboard and PC. Make sure to minimize the volume setting by pressing the **VOLUME -**.
4. To select your desired channel (01-16) which shown on the LCD display, press the **MIDI** button on keyboard.
5. You can play the keyboard by pressing the black & white keys. Then, you can hear the music you play from the speakers of your PC.



Note:

1. Your PC should be equipped with a sound card, a pair of speakers & installed MIDI software.
2. No information of auto-style, pre-recorded songs, sustain and transpose could be sent as MIDI data.

Connecting with (External device)

For two MIDI instruments to communicate, they must be connected by MIDI cables. In a basic example, the MIDI OUT terminals of this keyboard could be connected to the MIDI OUT and terminals of a sequencer, allowing you to record and play back performance data from this keyboard.

Specification

Number of keys.....	49
Polyphonic Sound.....	8-note (Max.)
Preset Voices.....	50
Auto-Styles.....	30
Prerecorded Songs.....	50
Effect.....	Transpose
Style Controls.....	TEMPO, FILL-IN, START/STOP
Built-In Speakers.....	4 ohm, 3WX2
Power Sources.....	DC 9V Adaptor 6 x 'C size' batteries
Dimensions (HxWxD).....	667x250x76 (mm)
Weight (Without Batteries).....	2.4kg

Specifications and designs are subject to change without notice.

— IMPORTANT —

Please read this document carefully before using the enclosed CD-ROM compact disc. By using the enclosed disc, you are agreeing to be bound by the terms of this license.

Software License

1. License. The CD-ROM compact disc (the “Disc”) enclosed with the End-User License (the “License”) contains proprietary copyrighted application and demonstration software (the “Software”) and related audio, video, graphic displays, copyrighted works and other materials (the “Materials”) owned by eMedia Music Corporation (“eMedia”). The software and Materials are licensed to you by eMedia. You own the compact disc on which the software is recorded, but all rights to the Software and Materials are reserved except for the limited rights granted you by this License. This License allows you to use the Software on a single computer only in conjunction with the authorized use of this Disc. You are expressly prohibited from copying, duplicating, reproducing, or otherwise transferring the Software and Materials for any purpose whatsoever, unless you transfer the Software and the Materials along with this Disc to another person who agrees to be bound by the terms of this License, and you retain no portion thereof or any copy thereof, in any form other than any additional copies of this disc that you rightfully possess. This License is personal to you and does not constitute a site license. FAILURE TO COMPLY WITH AND ADHERE TO THE TERMS OF THIS LICENSE COULD SUBJECT YOU TO LEGAL ACTION BY eMedia.

2. Restrictions. The Software and Materials contain copyrighted expression, trade secrets, and other proprietary materials. You may not decompile, reverse engineer, disassemble, or otherwise reduce the Software to a human perceivable form. You may not modify, network, rent, lease, loan, sell, or distribute the Software or the Materials, or any portion thereof, or prepare derivative works based upon them. You may not electronically copy or transfer the Software or the Materials from one computer to another, over a network or otherwise.

eMedia AND eMedia’s LICENSORS MAKE NO WARRANTIES, EXPRESS OR IMPLIED, INCLUDING WITHOUT LIMITATION THE IMPLIED WARRANTIES OF MERCHANTABILITY AND FITNESS FOR A PARTICULAR PURPOSE, REGARDING THE SOFTWARE. eMedia’s LICENSORS DO NOT WARRANT, GUARANTEE OR MAKE ANY REPRESENTATIONS REGARDING THE USE OR THE RESULTS OF THE SOFTWARE IN TERMS OF ITS CORRECTNESS, ACCURACY, RELIABILITY, CURRENTNESS OR OTHERWISE. THE ENTIRE RISK AS TO THE RESULTS AND PERFORMANCE OF THE SOFTWARE IS ASSUMED BY YOU. THE EXCLUSION OF IMPLIED WARRANTIES IS NOT PERMITTED BY SOME JURISDICTIONS. THE ABOVE EXCLUSION MAY NOT APPLY TO YOU.

IN NO EVENT WILL eMedia OR eMedia’s LICENSORS AND THEIR DIRECTORS, OFFICERS, EMPLOYEES OR AGENTS (COLLECTIVELY eMedia’s LICENSOR) BE LIABLE TO YOU FOR ANY CONSEQUENTIAL OR INCIDENTAL DAMAGES (INCLUDING DAMAGES FOR LOSS OF BUSINESS PROFITS, BUSINESS INTERRUPTION, LOSS OF BUSINESS INFORMATION, AND THE LIKE) ARISING OUT OF THE USE OR INABILITY TO USE THE SOFTWARE EVEN IF eMedia OR eMedia’s LICENSOR HAS BEEN ADVISED OF THE POSSIBILITY OF SUCH DAMAGES. BECAUSE SOME JURISDICTIONS DO NOT ALLOW THE EXCLUSION OR LIMITATION OF LIABILITY FOR CONSEQUENTIAL OR INCIDENTAL DAMAGES, THE ABOVE LIMITATIONS MAY NOT APPLY TO YOU. eMedia OR eMedia’s LICENSOR’S LIABILITY TO YOU FOR ACTUAL DAMAGES FROM ANY CAUSE WHATSOEVER, AND REGARDLESS OF THE FORM OF THE ACTION (WHETHER IN CONTRACT, TORT (INCLUDING NEGLIGENCE), PRODUCT LIABILITY OR OTHERWISE), WILL BE LIMITED TO THE PURCHASE PRICE OF THE DISC.

Note: Toys with long strings or cords may be dangerous for infants and very young children since they may become wrapped around an infant’s neck, causing strangulation. Please keep cables away from unattended children.



eMedia Music Corp. · 664 NE Northlake Way · Seattle, WA 98105 · (206) 329-5657

© 2009 eMedia Music Corp. All rights reserved.

EK05094M